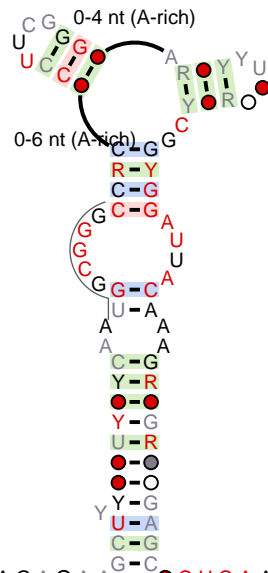


Bacteroidales-1



5'-AGCCG**Y**AY**Y**●RYURGA**U**Y**G**GARACUCA**U**CA—**CCG**AGAOAA●**CUC**AAAU**CYUGUY**●**Y**●**CGG**AG**UUU**●RYCRYAUC●●YRGUGCGGCU

11-17 nt

Bacteroidales-1-pknot

subfam_weight=1

